

Commercial and Industrial Fittings

Description	Page	NEC	CEC	ATEX/ IEC
-------------	------	-----	-----	--------------

Conduit Bodies				
Form 35™ Malleable Iron Conduit Outlet Bodies	9	X	X	
Spec 5 Conduit Bodies, Covers and Gaskets	15	X	X	
FM7™ Conduit Outlet Bodies	23	X	X	
Form 7™ Iron Conduit Bodies, Covers and Gaskets	30	X	X	
FM8™ Conduit Outlet Bodies	37	X	X	
Form 85™ Unilets™ Conduit Outlet Bodies, Covers and Gaskets	43	X	X	
Aluminum Conduit Bodies, Covers and Gaskets	50	X	X	
FM9™ Aluminum Conduit Outlet Bodies Covers Gaskets	62	X	X	
NEC 6x8x C, LB, UB, LL, LR and T Mogul Conduit Outlet Bodies, Covers and Gaskets	68	X	X	
Mogul Conduit Bodies, Covers and Gaskets	76	X	X	
LBD and LBDN Pulling Fittings	82	X	X	
Pull Boxes with Threaded Hubs and Covers	83	X		
Big-Bend Cast Pulling Elbow	84		X	
NEER™ Aluminum Threaded Conduit Bodies, Covers and Gaskets	86	X	X	
NEER™ All-In-One Threaded Conduit Bodies	89	X	X	
NEER™ All-In-One Multi-Hub Threaded and Set Screw Conduit Bodies	91	X	X	
NEER™ Aluminum Set Screw Conduit Bodies and Accessories	94	X	X	
EMT Adapters	95	X	X	

Conduit Outlet Boxes				
JB Conduit Outlet Boxes, Covers and Hangers	96	X		
BKX Round Junction Boxes	98		X	
SEH Conduit Outlet Boxes and Covers	102	X	X	
GS Conduit Outlet Boxes, Covers Hangers	103	X		
GS Round Junction Boxes	105		X	

Cast Device Boxes				
FS and FD Cast Hub Device Boxes	107	X	X	
FDB Single and Multiple Gang Cast Device Boxes	146	X		
FDH Single and Multiple Gang Cast Device Boxes	151	X		
FAH Weatherproof Receptacle and Breaker Assemblies	159		X	
OCB Outdoor Connection Box	160	X	X	



Commercial and Industrial Fittings

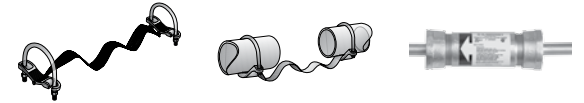
Description	Page	NEC	CEC	ATEX/IEC
-------------	------	-----	-----	----------

Expansion and Deflection Fittings				
AX Expansion Fittings	161	X	X	
TX Expansion Fittings	162	X		
EX Expansion Fittings	163	X	X	
BJ Bonding Jumpers	164	X	X	
ABJ Bonding Jumpers	165	X	X	
AXB Series Expansion Fittings with Integral Bond	166	X	X	
DX Deflection Expansion Fittings	167	X	X	
AXDX Deflection Expansion Fittings	168	X	X	
EXPB Expansion – Pull Box Fittings	169	X		
PB and PBW Pull Box Fittings	170	X		

Rigid and IMC Conduit Fittings				
SCC and SSP Series Threaded Rigid Conduit and IMC Bolt-On™ Couplings	172	X	X	
Threaded Three Piece Couplings and Elbows	173	X	X	
Type CH Space-Maker Conduit Hubs	175	X	X	
Type CHM Raintight Conduit Hubs	176	X	X	
Threaded Conduit Hubs With Bonding Screw	177	X	X	
Threaded Conduit Hubs	178	X	X	
Globally Certified Hubs	180	X	X	X
Aluminum Diecast Watertight Hubs	182	X	X	
Zinc Diecast Watertight Hubs	184	X	X	
Threaded Enlargers and Nipples	186	X	X	
Type ICC Phenolic Insulating Couplings	188	X	X	
Threadless Compression and Set-Screw Couplings and Connectors	189	X	X	
Type EF and Type EFL Concrete Slab Electroform Inserts	193	X	X	
Conduit End Bells	194	X	X	
Cable Supports	195	X	X	
Conduit Ventilators	214	X	X	
Conduit Sealing Bushings	215		X	



AX Expansion Fitting TX Expansion Fitting EX Expansion Fitting



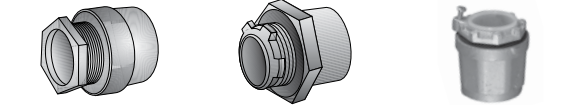
BJ Bonding Jumper ABJ Bonding Jumper AXB Expansion Fitting



DX Expansion Fitting AXDX Expansion Fitting EXPB Expansion Fitting



PB/PBW Pull Box Fitting SCC/SSP Coupling Three Piece Coupling



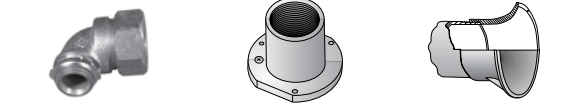
Type CH Type CHM Threaded Conduit Hub w/ Bonding Screw



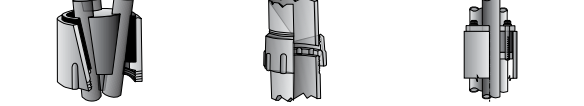
90° Threaded Conduit Hub Globally Certified Hub Aluminum Diecast Watertight Hub



Zinc Diecast Watertight Hub Male Enlarger Type ICC



90° Compression Box Connector Straight Conduit Insert Type TNS Conduit End Bell



Type S Cable Support Type KVF Conduit Ventilator Type CSBE Sealing Bushing

Commercial and Industrial Fittings

Description	Page	NEC	CEC	ATEX/IEC
-------------	------	-----	-----	----------

Rigid and IMC Conduit Fittings

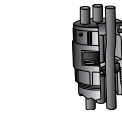
Cable Terminators	224		X	
Thru Wall Floor Seals	236	X	X	
NEER™ Zinc Bushed Conduit Nipples	249	X	X	
NEER™ Zinc Offset Nipples and Three Piece Couplings	250	X	X	
NEER™ Zinc Pulling Ells	251	X	X	

Rigid and IMC Straps, Clamps and Hangers

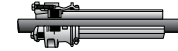
Beam Clamps, Straps, Clamps and Clamp Backs for Rigid Metal Conduit or IMC	252		X	
Rigid Metal Conduit, IMC or EMT “K-Clamps”	259		X	
Rigid Metal Conduit, IMC or EMT Hang-On™ Hangers	261	X	X	
Rigid Metal Conduit, IMC or EMT Pipe Hangers	262	X	X	
CTC Conduit Cable Tray Clamps	266	X	X	
TCC Single TCCD Double Conduit Cable Tray Clamps	268	X		
NEER™ Straps	269	X	X	
NEER™ Conduit Hangers	270	X		
NEER™ Nail Straps	271	X		
NEER™ Beam Clamps, Jack Chain and S Hooks	272	X	X	
NEER™ Cable Staples	273	X	X	

Liquidtight Conduit Fittings

Installation Features of ST™, STB, STN and STL Connectors and Hubs	274	X	X	
Liquidtight ST™ Series Plain Throat and STB Series Insulated Throat Connectors	275	X	X	
Liquidtight STF Connectors with Threaded Hubs	278	X	X	
Liquidtight Flexible Metal Conduit Connectors with Wire Mesh Strain Relief	279	X	X	
Liquidtight ST™ Series Plain Throat and STB Series Insulated Throat Connectors and External Grounding Lugs	282	X	X	
Aluminum Liquidtight ST™ Series Connectors with Plain Throat	285	X	X	
Liquidtight STN Insulated Connectors for Liquidtight Flexible Metal Conduit	286	X	X	
Liquidtight Flexible Nonmetallic Conduit Connectors	288	X	X	
Liquidtight STNM™ Type A Flexible Nonmetallic Conduit Connectors	289	X	X	
PG and ISO Metric Thread Liquidtight Insulated Connectors	290	X	X	
Liquidtight Accessories	293	X	X	
4Q Straight Liquidtight Connectors	294	X	X	
4Q 45° and 90° Liquidtight Connectors	296	X	X	



Type CRC Cable Terminator



Type FSK Thru Wall Floor Seal



NEER™ Zinc Bushed Conduit Nipple



NEER™ Zinc Three Piece Coupling



90° Female/Female Pulling Ell



Beam Clamp



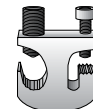
Right Angle Type “K-Clamp”



Hang-On™ Conduit Hanger with Bolt



Type AJ Pipe Hanger



Cable Tray Grounding Clamp



TCC Single Conduit Cable Tray Clamp



NEER™ One Hole Click-On Strap



NEER™ Conduit Hanger



NEER™ Nail Strap



NEER™ S Hook



NEER™ Cable Staple



Liquidtight ST™ Plain Throat Connector



Liquidtight STF Connector



Liquidtight Wire Mesh Strain



STB Insulated Throat Connector



Aluminum Liquidtight ST™ Connector with Plain Throat



Liquidtight STN Insulated Connector



Liquidtight STNM™ Flexible Nonmetallic Connectors



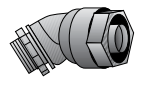
PG/ISO Liquidtight Connector



Steel Backed Neoprene Sealing Gasket Accessory



4Q Straight Liquidtight Connectors



4Q 45° Liquidtight Connector

Commercial and Industrial Fittings

Description	Page	NEC	CEC	ATEX/ IEC
-------------	------	-----	-----	--------------

Liquidtight Conduit Fittings

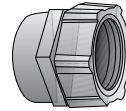
4Q-FM Liquidtight Combination Couplings	300	X	X	
4Q-WM Wire Mesh Liquidtight Connectors with Wire Mesh Strain Relief	301	X	X	
4Q Liquidtight Sealing Ring Assemblies	302	X	X	
Ground-Tite® 4Q Grounding Liquidtight Connectors	303	X	X	
Ground-Tite® 4Q 45° Grounding Liquidtight Connectors	304	X	X	
Ground-Tite® 4Q 90° Grounding Liquidtight Connectors	305	X	X	
Ground-Tite® 4Q Liquidtight Combination Couplings	306	X	X	
4Q Liquidtight Connectors	307	X	X	
4QS Straight, 45° and 90° Steel Liquidtight Fittings	308	X	X	
4QSS Straight, 45° and 90° Stainless Steel Liquidtight Connectors	309	X	X	
NEER™ Zinc Liquidtight Connectors	310	X	X	
NEER™ Nylon Liquidtight Connectors	312	X		

Cord and Tray Cable Connectors

Aluminum and Steel Liquidtight Strain Relief Cord and Cable Connectors	313	X	X	
Stainless Steel and Nickel Plated Aluminum Liquidtight Cable and Cord Connectors	319	X	X	
Grip-Tite® Strain Relief Connectors	322	X	X	
Gold Seal Strain Relief Connectors	325	X	X	
Type CGA Aluminum Straight Strain Relief Cord Grip Connectors	327	X	X	
Type CGA Aluminum 90° Strain Relief Cord Grip Connectors	328	X	X	
Type CGA Aluminum Straight and 90° Strain Relief Cord Grip Connectors	329	X	X	
Bus Drop Cable Supports and Clamps	330	X	X	

Bushings and Locknuts

Types A, ABB, BB and BBL Insulating Bushings	331	X	X	
Types B, HB, AB, RB, SB and SBT Specification Grade Insulated Bushings	333	X	X	
Types BLG and HBLG Specification Grade Insulated Grounding Bushings	335	X	X	
Types ABLG and RBLG Specification Grade Insulated Grounding Bushings	337	X	X	
Type SBLG Specification Grade Insulated Grounding Bushings	339	X	X	
Type 300R Hex Reducing Bushings	341	X	X	
Conduit Bushings for Rigid Metal Conduit and IMC	342	X	X	
Insulated Grounding Bushing for Threadless and Threaded RMC IMC	345	X	X	
Rigid Conduit and IMC Locknuts	353	X	X	
NEER™ Zinc Bushings	355	X	X	
NEER™ Zinc Grounding Type Insulated Bushings	356	X	X	
NEER™ Standard Conduit Locknuts	357	X	X	
Type RW Reducing Washers	359	X	X	
Reducing Washers	360	X	X	
NEER™ Reducing Washers and Bushings	361	X	X	



4Q-FM Liquidtight Combination Coupling



4Q-WM Wire Mesh Strain



4Q Liquidtight Sealing Ring Assemblies



Ground-Tite® 4Q Grounding Liquidtight Connector



Ground-Tite® 4Q Liquidtight Combination Coupling



ETP™ 4QS Liquidtight Connector



ETP™ 4QSS Liquidtight Connector



Neer™ Zinc Liquidtight Connector



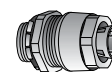
Neer™ Nylon Liquidtight Connector



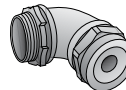
Aluminum Liquidtight Strain Relief Cord and Cable Connector



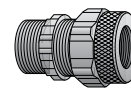
Nickel Plated Aluminum Connector



Grip-Tite® Strain Relief Connector



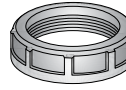
Gold Seal Strain Relief Connector



Type CGA Aluminum Strain Relief Cord Grip Connector



Bus Drop Cable Clamp and Strap



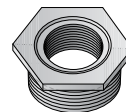
Type A Insulating Bushing



Type SB Specification Grade Insulated Bushing



Type SBLG Specification Grade Insulated Grounding Bushing



Hex Reducing Bushing



Threaded Conduit Bushing



Insulated Grounding Bushing



Rigid Conduit an IMC Locknut



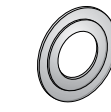
NEER™ Zinc Insulated Bushing



NEER™ Zinc Grounding Type Insulated Bushing



NEER™ Standard Conduit Locknut



Reducing Washer



NEER™ Reducing Bushing

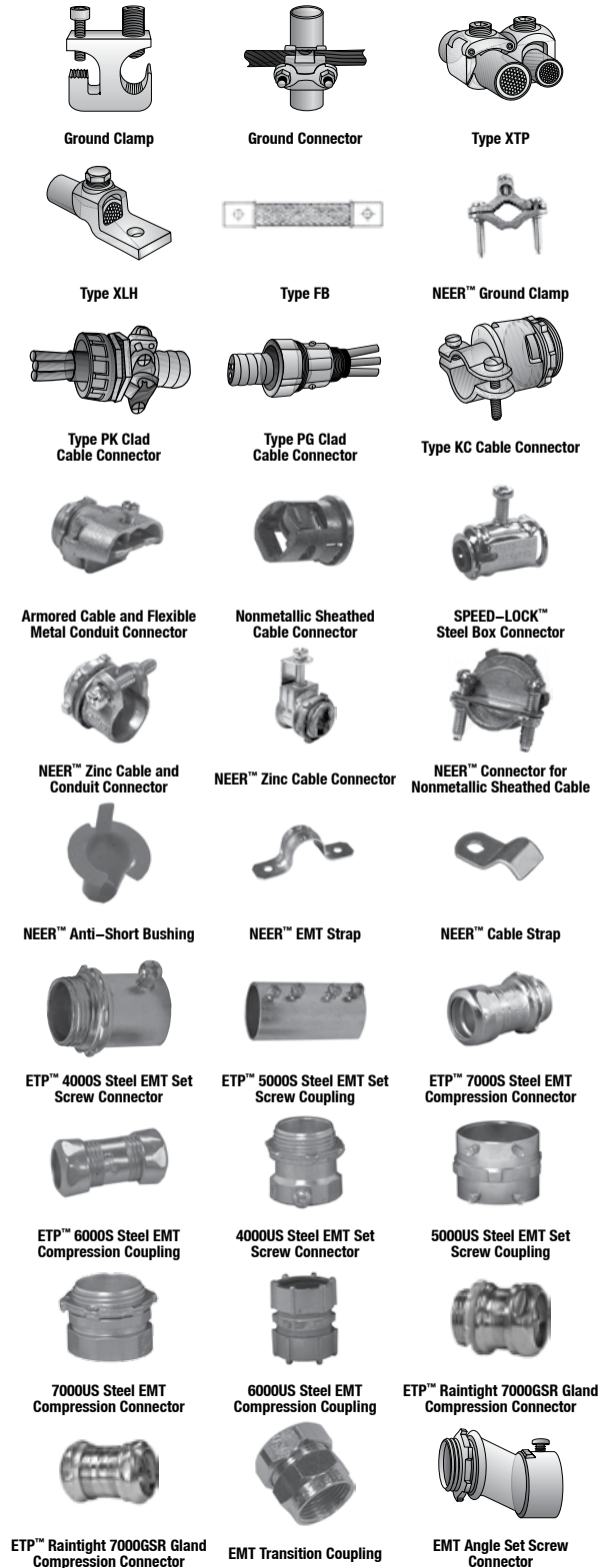
Commercial and Industrial Fittings

Description	Page	NEC	CEC	ATEX/IEC
-------------	------	-----	-----	----------

Grounding Fittings and Solderless Connectors				
Ground Clamps	362	X	X	
Ground Connectors	368	X	X	
XTP and XTPC Solderless Combination T and Parallel Taps	373	X		
Type XLH Solderless Connectors Combination Type Lugs	375	X		
Type FB Solderless Flexible Braid Connectors	376	X	X	
NEER™ Ground Clamps	377	X	X	

Armored Cable, Metal Clad, Flexible Metal Conduit and Nonmetallic Connectors				
Type PK Armored/Metal Clad Cable Connectors	379	X	X	
Type PG Armored/Metal Clad Cable Connectors	380	X	X	
Cable Connectors	381	X	X	
Armored Cable and Flexible Metal Conduit Connectors	390	X	X	
Nonmetallic Sheathed Cable Connectors	395	X	X	
SPEED-LOCK™ Steel Box Connectors and SPEED-LOCK™ Zinc Snap Connectors	396	X	X	
NEER™ Zinc Cable and Conduit Connectors	399	X	X	
NEER™ Zinc Cable Connectors	404	X	X	
NEER™ Connectors for Nonmetallic Sheathed Cable	405	X	X	
NEER™ Anti-Short Bushings	407	X	X	
NEER™ EMT Straps	408	X	X	
NEER™ Cable Straps	409	X	X	

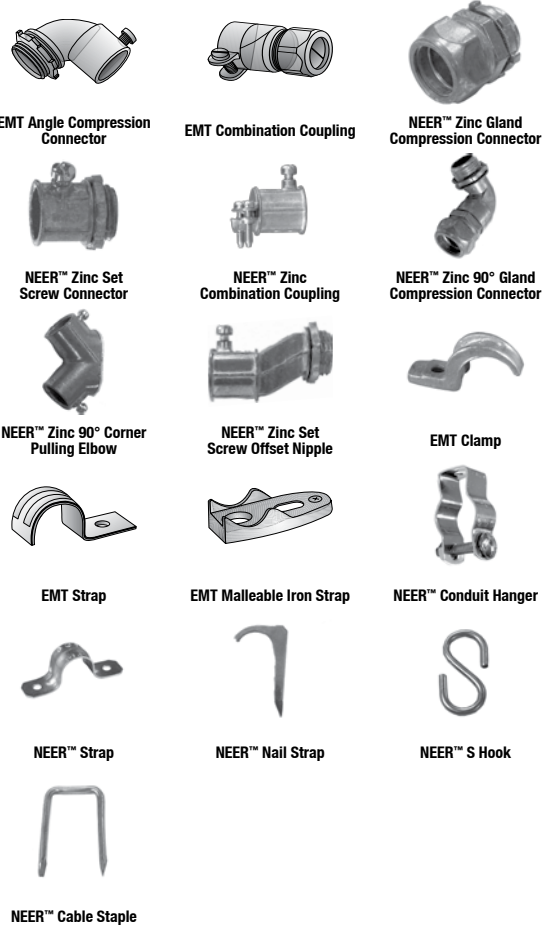
EMT (Electrical Metallic Tubing) Fittings				
ETP™ 4000S Series Steel EMT Set Screw Connectors	410	X	X	
ETP™ 5000S Steel EMT Set Screw Couplings	411	X	X	
ETP™ 7000S Series Steel EMT Compression Connectors	412	X	X	
ETP™ 6000S Steel EMT Compression Couplings	413	X	X	
ETP™ 4000US Series Steel EMT Set Screw Connectors	414	X	X	
ETP™ 5000US Steel EMT Set Screw Couplings	415	X	X	
ETP™ 7000US Series Steel EMT Compression Connectors	416	X	X	
ETP™ 6000US Steel EMT Compression Couplings	417	X	X	
ETP™ Raintight 7000GSR Series Gland Compression Connectors	418	X		
ETP™ Raintight 6000GSR Series Gland Compression Couplings	419	X		
EMT Transition Couplings	420	X		
EMT Angle Set Screw Connectors	422	X	X	



Commercial and Industrial Fittings

Description	Page	NEC	CEC	ATEX/IEC
-------------	------	-----	-----	----------

EMT (Electrical Metallic Tubing) Fittings				
EMT Angle Compression Connectors	423	X	X	
EMT Combination Couplings	426	X	X	
NEER™ Zinc Gland Compression Connectors and Couplings	427	X	X	
NEER™ Zinc Set Screw Connectors and Couplings	428	X	X	
NEER™ Zinc Combination Couplings	429	X	X	
NEER™ Zinc 90° Gland Compression Connectors	430	X	X	
NEER™ Zinc 90° Corner Pulling Elbows	431	X	X	
NEER™ Zinc Set Screw Offset Nipples	432	X	X	
EMT Clamps and Straps	433	X	X	
EMT Straps	435		X	
EMT Malleable Iron Straps and Spacers	437		X	
NEER™ Conduit Hangers	439	X		
NEER™ Straps	440	X	X	
NEER™ Nail Straps	441	X		
NEER™ Beam Clamps, Jack Chain and S Hooks	442	X	X	
NEER™ Cable Staples	443	X	X	



Commercial and Industrial Fittings

Description	Page	NEC	CEC	ATEX/ IEC
Outlet Boxes, Switch Boxes and Covers				
Capacity of Steel Boxes and Covers	444	X	X	
Outlet and Switch Boxes	445	X	X	
Styles of Clamps and Brackets	446	X	X	
4" Round Ceiling Fan Box With and Without Support Bar Hanger	448	X	X	
4" Octagon Ceiling Fan Boxes With and Without Support Bar Hanger	449	X	X	
Round Boxes and Covers	450	X	X	
3-1/4" Octagon Boxes and Extension Ring	451	X	X	
4" Octagon Boxes	452	X	X	
4" Octagon Box Extension Rings	457	X	X	
4" Octagon and Round Covers	458	X	X	
4" Square Boxes	459	X	X	
4" Square Boxes with Snap-In Brackets	468	X	X	
4" Square Box Extension Rings and Thru-Ring	470	X	X	
4" Square Covers	471	X	X	
4-11/16" Square Boxes	481	X	X	
4-11/16" Square Boxes and Extension Rings	484	X	X	
4-11/16" Square Covers	486	X	X	
Handy Boxes	491	X	X	
Handy Boxes and Extension Ring	493	X	X	
Handy Box Covers	495	X	X	
4" Octagon Concrete Boxes and Back Plates	497	X	X	
Adjustable Bar Hangers	498	X	X	
Switch Boxes	499	X	X	
Multigang Switch Boxes	515	X	X	
Multigang Switch Box Covers	516	X	X	
Masonry Boxes	517	X	X	
Knockout Blanks and Fixture Stems	519	X	X	
Outlet Box/Switch Box Accessories	520	X	X	
NEER™ Safety Plates and Switch Box Supports	521	X		



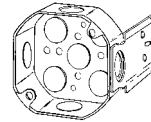
CL-9



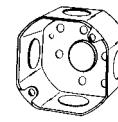
JB



FFS-4CL



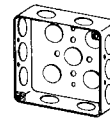
40JB-1/2



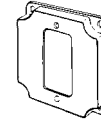
30-1/2



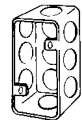
8409A



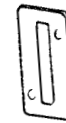
4SL-1/2



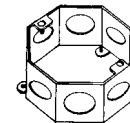
8362



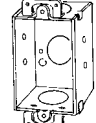
4SS



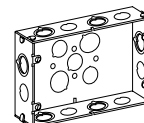
2520



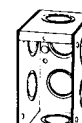
OCR2



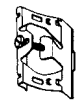
94



2G5075S



M1-250



892

Commercial and Industrial Fittings

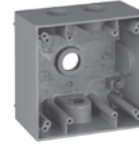
Description	Page	NEC	CEC	ATEX/ IEC
-------------	------	-----	-----	--------------

Weatherproof Boxes, Covers and Lighting Fixtures				
Weatherproof Boxes, Covers, Lampholders and Lighting Fixtures	522	X	X	
One-Gang Weatherproof Outlet Boxes and Extensions	523	X	X	
Two-Gang Weatherproof Outlet Boxes and Extensions	526	X	X	
One-Gang Weatherproof Covers	529	X	X	
One-Gang Weatherproof In-Use Covers with Inserts	534	X	X	
Two-Gang Weatherproof Covers	536	X	X	
Two-Gang Weatherproof In-Use Covers with Inserts	539	X	X	
Round Weatherproof Outlet Boxes and Extensions	541	X	X	
Round Weatherproof Covers	542	X	X	
Ceiling Plates and Lampholders	543	X	X	
Weatherproof Incandescent Fixtures	544	X	X	
Accessories and Replacement Parts	545	X	X	
Non-Metallic Weatherproof Boxes, Covers and Lampholders	546	X	X	
Non-Metallic Weatherproof Covers	548	X	X	

Service Entrance Fittings				
Service Entrance Heads	551	X	X	
Watertight Service Entrance and UF Cable Connectors	555	X		
Non-Watertight Service Entrance Connectors	557	X	X	
Service Entrance Cable Connectors	559	X		
Nonmetallic Sheathed and Service Entrance Cable Connectors	561	X	X	
Round Service Entrance Straps and Nails	563		X	
NEER™ Aluminum Service Entrance Pulling Ells	564	X	X	
NEER™ Aluminum Entrance Caps	565	X		
NEER™ Service Entrance Caps and Straps	567	X	X	
NEER™ PVC Entrance Caps	568	X	X	
NEER™ Zinc Two Screw Connectors For Service Entrance Cable	569	X	X	
NEER™ Service Entrance Flashings	570	X	X	
NEER™ Service Entrance Wire Holders	571	X	X	
NEER™ Service Entrance Connectors	572	X	X	
NEER™ Duct Sealing Compound	573	X		



WSL150



WSL250



WE



WRX50



WCB1



WC1150



WCB24



WVSG2



WCR350



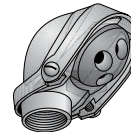
WSM150GNM



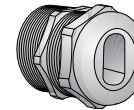
WCT1GNM



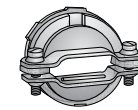
WCIU1DV/ WCIU2SD



Service Entrance Head



Watertight Service Entrance and UF Cable Connector



Non-Watertight Service Entrance Connector



Service Entrance Cable Connector



Nonmetallic Sheathed Cable Connector



Round Service Entrance Strap



NEER™ Aluminum Service Entrance Pulling Ell



NEER™ Aluminum Entrance Cap



NEER™ Service Entrance Strap



NEER™ PVC Entrance Cap



NEER™ Zinc Two Screw Connector For Service Entrance Cable



Duct Sealing Compound